



OXY VAC India Works
Designing a Customized Solution for Gas Industries

✉ oxyvacindia@gmail.com
🌐 www.oxyvacindia.com
☎ 9726024747



SPECIALIZED GAS HANDLING EQUIPMENTS AND DEVICES

Dear Clients and Business Partners,

Oxyvac India works has been in operation from 2017 we utilize some of the best engineers whose qualifications include outstanding excellence coupled with long practical experience in the field of engineering, construction and specialized erection activities, especially in the oil and Gas industry. We have managed to complete a vast array of important projects in our history from specialized fabrication, erection and maintenance of tanks, static & rotary equipment and pipework.

Our quality management system is certified and complies with the requirements of ISO 9001:2015. We consistently - to be a leader of the market in the field of engineering and maintenance of distribution heavy duty installations in the oil and gas industry sectors. We continue to develop and offer further above standard solutions and procedures for our customers. We are glad to serve you as "Your Reliable Partner".



ABOUT US

“OXYVAC INDIA WORKS” is a renowned company incorporated in the year 2017, in Vadodara (Gujarat, India). We are engaged in Service providing of “Designing a Customized Solution for Gas Industries”



Experience:

We offer a wide range of service to our clients, We are the one-stop for all your piping & fitting solution; Our experience will help our customer to get the accurate desired solution effectively.

Mission:

The mission of OXY VAC is committed to fulfill our customers expectation by serving them appropriate products and very timely service. Our vision is a long term commitments to the industry and our customers. Which is possible through our collective experience and our belief in honesty, integrity, reliability, long-standing relationships and trust.



Vision:

The vision of company is based on its value of continuous innovation, undying commitment and elaborate customer interaction. The company strives to provide the best possible solution to the customer by listening and understanding the various needs of the customer.

Quality:

Accredited with ISO 9001:2015 certification, Material are checked through approved and authorised laboratories, with complete component traceability and documentation.

We have policy of continues improvement and are constantly focusing on upgrading our products with a view to enhancing their performance.



Registration Certificates

- ISO 9001:2015 certification
- SHOP AND ESTABLISHMENT REGISTRATION NO. B-26/41121.
- PAN CARD NO. AAFF01698F
- GSTIN REG NO. 24AAFF01698F1Z7
- MSME REG. NO. GJ24A0029584

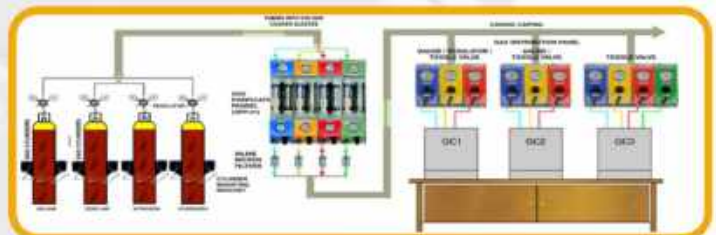
SOME OF OUR CLIENTS



OUR PRODUCTS & SERVICES

We offer Customized Design of Gas Pipeline and application for Gas industries requirement. Gas Pipeline Service to the well known international standards depending on the client's Preference. We also offer Industries Fabrication, Electrical and Instrumentation work as per Turnkey Packages, Using qualified and Technically Competent Subcontractors.

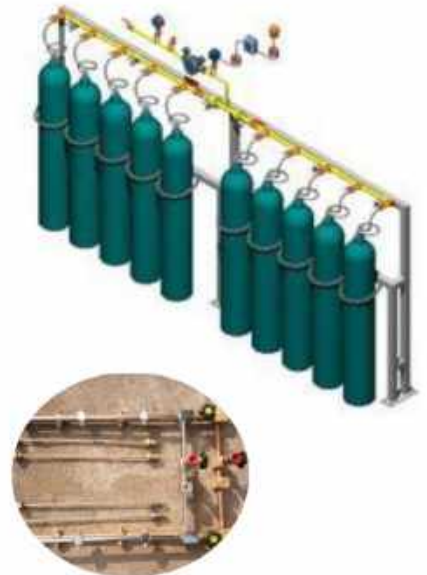
- 1 Gas Cylinder Hydro static Stretch Testing Equipment as per IS 5844
- 2 Gas User Manifolds and Operating System
- 3 Gas Filling Station Setup for all Gases: Hydrogen, Oxygen, Argon, Nitrogen, Co2, Mo2 etc.
- 4 Gas Cylinder Manifold Skid I MCP I Quad I Bank for All Gases
- 5 Gas Handling Equipment : Pumps I Valves I Regulators I Pressure Gauges I Temperature Gauges I Filter I Safety Relief Valves I Cylinder Racks I Cylinder Cabinets I Liquid Cylinder Repairing and Service
- 6 Gas Filling Safety System and Co2 Flooding System
- 7 Pressure Reducing and Metering Skid for LNG I CNG I H2 I N2 I O2
- 8 Gas Distribution Panels and Skid
- 9 Gas Vaporiser And Pipeline auto Switching System PLC Based
- 10 High Pressure Pigtails for Gas Cylinder Connecting
- 11 Flexible Hose Assembly and Fittings
- 12 Gas Pipeline and Fitting for All Gases I Vacuum Jacketed Piping And
- 13 High Purity Gas Piping I SS Tubing And Tube Fitiing I Gas Analysis Lab Piping



We Supply Products as per Nation and International Standards Keeping the best Quality Management Process, Efficient and Skilled Workforce and responsive After Sales Service.

GAS MANIFOLDS

- 1. Oxyvac provides gas manifolds for different gases application with Normal Use and Auto changeover System.
- 2. Provide good quality and durable gas manifolds in SS 304, Brass-Copper, SS 316 and MS Constructed.
- 3. Gases Application: Argon, Nitrogen, Oxygen, Hydrogen, Compressed Air, LPG, Natural Gas, Ammonia, CH₄, CO₂ etc.
- 4. Working Pressure: 0 to 700 Bar.
- 5. Mounting : Wall and Stand Mounting with Chain Clamping
- 6. Manifolds Provides for High Purity gases and Ultra pure gases
- 7. Custom based Solution provide for all types of Manifolds.



CYLINDER QUAD & SKID MANIFOLD

- 1. Design, Fabrication of Different Gases Cascades-skid
- 2. Stand Mounted and Vehicle Mounted skid
- 3. Gas Application : Oxygen, Argon, Nitrogen, Hydrogen, CO₂, LPG, Air, Ammonia, CH₄
- 4. MOC: SS 304, SS 316, Brass-Copper, CS, MS etc.
- 5. Pressure Range : 1 Bar to 700 Bar



GAS HANDLING EQUIPMENT & DEVICES

- 1. All types of Pressure Regulators in different Materials constructed.
- 2. Service Regulators, Gas Filters, Gas Flow Meters, Adaptors, Non Return Valves, Safety Valves, Flame arrestors, Needle Valves, Line Valves etc.
- 3. Pressure Reducing System for All gases.
- 4. SS 316/SS304 Gas Pipe Line fittings.
- 5. Gas Cylinder Cabinets and Storage caddes



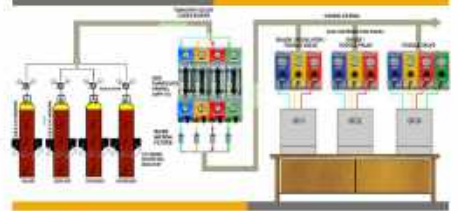
CYLINDER HYDROTESTING EQUIPMENT

- 1. Design, Testing, Installation and Commissioning of Gas Testing Equipments with all Documentation of Govt. Approvals.
- 2. Gas Cylinder Testing Plant setup
- 3. Testing Plants : Oxygen, Argon, Nitrogen, Hydrogen, CNG, Co₂, LPG, Air, Ammonia, CH₄ etc.
- 4. Cylinder Capacity : 10 L to 200 L Water Capacity



GAS PIPELINE DISTRIBUTION & AUTO SWITCHING

- 1 Oxyvac provides gas pipeline installation for Different Gas Users and Manufacturing Industries.
- 2 We provide Vacuum jacketed (VJ) lines for Cryogenic Gases Application.
- 3 Provide good quality and durable gas pipeline constructions in SS 304, Brass-Copper, SS 316 and MS materials.
- 4 Gases Application: Argon, Nitrogen, Oxygen, Hydrogen, Compressed Air, LPG, Natural Gas, Ammonia, CH₄, CO₂ etc.
- 5 Working Pressure: 0 to 700 Bar.
- 6 Gas analysis Lab piping with high purity gases and high quality gas pipeline.



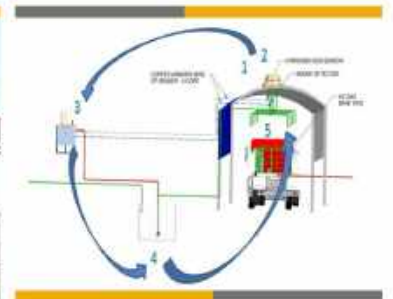
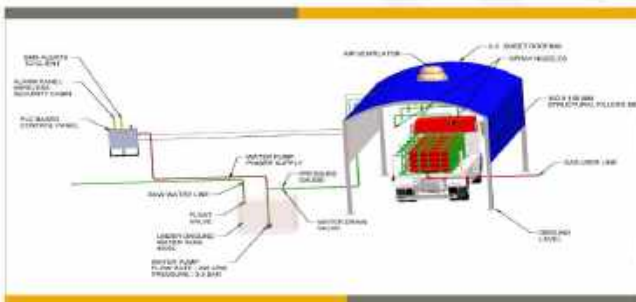
GAS CYLINDER FILLING STATIONS

- 1 Design, Testing, Installation and Commissioning of Gas Filling Station Setup
- 2 Gas Control Panel and Filling Manifold Setup
- 3 Gas Application : Oxygen, Argon, Nitrogen, Hydrogen, CO₂, LPG, Air, Ammonia, CH₄



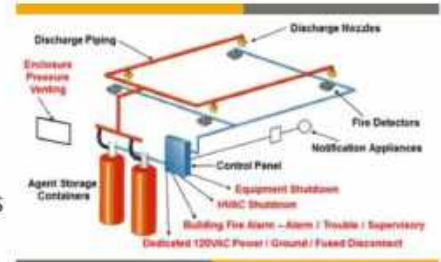
Co2 AUTO FLOODING SYSTEM

When Hydrogen Gas Leak from any Joint of Piping due to any reason, It Moves naturally upward Direction due to light weight and Air Flow of Natural Ventilation Fan, The H₂ Gas Detector Set PPM Level detection of hydrogen Gas And give Signal to control panel to start water pump, Water spray from nozzle, Which fitted top of bank. Also the the control panel give a light blinking Signal, Hooters and SMS alert to Client. Water Spray Prevent the Fire, Explosion of Cylinders, Bank Due to Compressed Hydrogen Gas.



Co2 AUTOMATIC FLOODING:

Co₂ Flooding Systems are used for protect electrical equipment due to it is electrically non conductive. This type of fire extinguisher system consist of high pressure cylinder & Low Pressure Tanks contain Co₂ Because it is a gas agent, it is further far fire in electrical and electronic equipment as well as flammable Liquids.



GAS PRS-LNG/CNG/PNG/H2/N2/O2/MO2/AR/MIX

Pressure regulating stations are required to supply certain quantity of gas at specific operating pressure. The PRS essentially performs a safety .incidentally the limitation of pressure in the downstream end is supported by safety devices like slam shut off valve, safety relief valve, creep relief valve etc.

Gas Type	inlet Pressure	Outlet pressure	Flow rate
LPG, PNG, Nitrogen, Ammonia, Mixed Gases	0-49 Kg/cm ²	0.03to26Kg/cm ²	100 to 6000 SCMH
Argon, Co ₂ , Oxygen, Nitrogen, Ammonia, Mixed Gases	0-250 Kg/cm ²	1 to 49 Kg/cm ²	100 to 6000 SCMH
Hydrogen	0-250 Kg/cm ²	1 to 4 Kg/cm ²	1-1000 SCMH



LNG RE-GASIFICATION, PRS AND METERING

LNG Re - gasification Unit Design, Supply, Erection, Testing and Commissioning with LNG Tanks, Vaporizers, PRS skid, Metering skid, Distribution Pipeline.



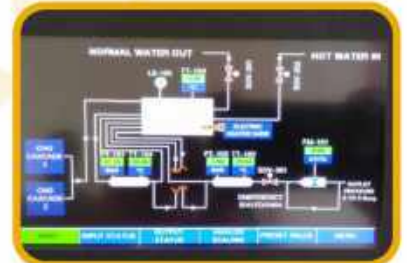
CNG DE-COMPRESSION SKID

We can also supply CNG decompression skid/pressure reduction & Metering system with Electrical Water Bath Heating along with Turbine/RPD Meter & separate Electronic Volume Corrector for following specifications,

Inlet Pressure: up to 250 kg/cm²

Outlet Pressure: 1 to 4 Kg/cm²

Flow Rate: up to 2000 SCMH



GAS VAPORIZER AND GAS TRAINS AUTO SWITCHING

cryogenic Gas supply Auto changeover unit Design and supply with installation and commissioning. PNG Gas line auto switching for different supply line on pressure and Temperature Basis.



HIGH PRESSURE PIGTAILS

Stainless steel corrugated hose with the pre-assembled cylinder valve adaptor. working pressure up to 300 bar. Robust design according ISO 10380

The high pressure corrugated hose consists from two ends. The inlet is equipped with pre-assembled cylinder valve adaptor according to national standard, outlet connection for Dn6 has W21,8 for air gases and Co2, W21,8LH for flammable gases. Corrugated hose is covered by stainless steel braid and safety line. The set pressure leak tested.

Nominal Hose Size	Outer Dia Without Armor	Maximum Working Pressure	Minimum Dynamic Bend Radius	Standard Length	Minimum Working Temperature	Maximum Working Temperature
						
5/16	20 mm with Armor 15 mm Without Armor	300 kg/cm ² g	1" Without AG	1 Metre Without Fitting	-60 °C	+260 °C



Application

The stainless steel corrugated hoses are designed solely to deliver gaseous media from gas cylinders to gas control panels (expansion manifolds).

Special Features

- Easy to use for different gases
- Delivered in different lengths
- Flexible hose for acetylene with check valve in the inlet
- Safety Wire Rope
- Cleaned for oxygen


Material of Construction

Fitting
 Brass or SS304/316 Stainless Steel

Inner Tube
 Teflon

Braiding
 304/316 Stainless Steel - Single / Double



<p>FLEXIBLE PIGTAILS</p>  <p>1/4" HIGH PRESSURE PIGTAIL HAVING SAFETY SPRING AND SAFETY WIRE WITH CGA END FITTINGS</p>	<p>FLEXIBLE PIGTAILS</p>  <p>1/4" HIGH PRESSURE PIGTAILS HAVING SAFETY SPRING AND SAFETY WIRE WITHOUT END FITTINGS</p>	<p>FLEXIBLE PIGTAILS</p>  <p>1/4" HIGH PRESSURE PIGTAIL WITH SAFETY SPRING COVER ONLY</p>	<p>FLEXIBLE PIGTAILS</p>  <p>1/4" HIGH PRESSURE PIGTAIL WITHOUT SAFETY SPRING AND SAFETY WIRE</p>	<p>BRASS-ADOPTOR</p>  <p>5/8" BSPM LH X 5/8" BSPF RH</p>
<p>COOPER PIGTAILS</p>  <p>COPPER PIGTAIL 8X4 MM-500 MM-43% SILVER BRAZED</p>	<p>COOPER PIGTAILS</p>  <p>COPPER PIGTAIL 8X4 MM-1000 MM-43% SILVER BRAZED</p>	<p>COOPER PIGTAILS</p>  <p>COPPER PIGTAIL 8X4 MM-650 MM-43% SILVER BRAZED</p>	<p>COOPER PIGTAILS</p>  <p>COPPER PIGTAIL 8X4 MM-600 MM-43% SILVER BRAZED</p>	<p>COOPER MANIFOLD</p>  <p>COPPER PIGTAIL 8X3 MM-650 MM-43% SILVER BRAZED</p>

CGA FITTINGS



Nut Pt # CGA-200Nut
 Nipple Pt # CGA-200Nipple



Nut Pt # CGA-320Nut
 Nipple Pt # CGA-320Nipple



Nut Pt # CGA-326Nut
 Nipple Pt # CGA-326Nipple



Nut Pt # CGA-346Nut
 Nipple Pt # CGA-346Nipple



Nut Pt # CGA-347Nut
 Nipple Pt # CGA-347Nipple



Nut Pt # CGA-350Nut
 Nipple Pt # CGA-350Nipple



Nut Pt # CGA-510Nut
 Nipple Pt # CGA-510Nipple



Nut Pt # CGA-520Nut
 Nipple Pt # CGA-520Nipple



Nut Pt # CGA-540Nut
 Nipple Pt # CGA-540Nipple



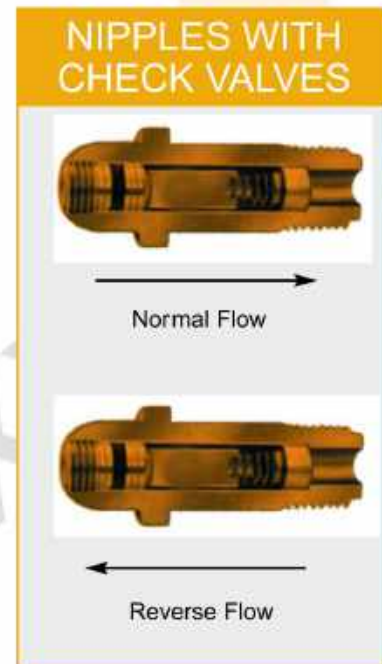
Nut Pt # CGA-580Nut
 Nipple Pt # CGA-580Nipple



Nut Pt # CGA-622Nut
 Nipple Pt # CGA-622Nipple



Nut Pt # CGA-624Nut
 Nipple Pt # CGA-624Nipple



FLEXIBLE HOSES ASSEMBLY & FITTINGS

R2 AT / 2 SN - HYDRAULIC

HOSE I.D. (NOM.)	HOSE O.D. (NOM.)		WORKING PRESSURE		MIN. BURST PRESSURE		
	(IN.)	(MM)	(PSI)	(BAR)	(PSI)	(BAR)	
3/16	4.8	0.55	14.0	6,010	415	24,040	1,660
1/4	6.4	0.59	15.0	5,800	400	23,200	1,660
5/16	8.0	0.65	16.5	5,075	350	20,300	1,400
3/8	9.5	0.74	18.8	4,800	330	19,200	1,320
1/2	12.7	0.87	22.0	4,000	276	16,000	1,104
5/8	16.0	0.99	25.2	3,625	250	14,500	1,000
3/4	19.0	1.15	29.2	3,100	215	12,400	860
1	25.4	1.48	37.6	2,400	165	9,600	660
1 1/4	31.8	1.87	47.5	1,800	125	7,200	500
1 1/2	38.1	2.14	54.3	1,300	90	5,200	360
2	50.8	2.50	67.0	1,160	80	4,640	320
2 1/2	63.5	3.27	83.0	1,015	70	4,060	280
3	76.2	3.78	96.0	798	55	3,192	220

APPLICABLE STANDARD

Standard: SAE J517 - 100 R2/EN 853-2SN

Application: Agriculture, Earthmoving & Material Handling Equipment & Machinery

CONSTRUCTION

Core: Oil & Water resistant synthetic rubber.

Reinforcement: Double steel wire braids

Cover: Black color, synthetic rubber resistant to weather and abrasion, oil & ozone.

TEMPERATURE RANGE

Continuous: 40c to +120c Impluse Cycle : 150,000; Tested Upto 400,000 cycles, upto 1" I.D.



P.T.F.E. (PLAIN TEFLON) HOSE

HOSE I.D. (NOM.)	HOSE O.D. (NOM.)		WORKING PRESSURE		MIN. BURST PRESSURE		
	(IN.)	(MM)	(PSI)	(BAR)	(PSI)	(BAR)	
1/8	3.35	0.24	6.27	3,260	225	13,040	900
3/16	4.83	0.310	7.87	2,750	190	11,000	760
1/4	6.48	0.365	9.27	2,610	180	10,440	720
5/16	8.00	0.440	11.18	2,540	175	10,160	700
3/8	9.85	0.490	12.45	2,390	165	9,560	660
13/32	10.40	0.545	13.85	2,030	140	6,120	560
1/2	12.83	0.630	16.00	1,740	120	6,960	480
5/8	16.00	0.760	19.30	1,270	88	5,080	352
3/4	19.18	0.900	22.86	1,010	70	4,040	280
7/8	22.30	1.030	26.20	870	60	3,480	240
1	25.53	1.160	29.46	870	60	3,480	240
1 1/8	29.00	1.300	33.10	630	44	2,520	176

APPLICABLE STANDARD

Standard: SAE J517 - 100R14

Application: For transfer chemical with high temperature etc..

CONSTRUCTION

Core: Sintered tube of polytetrafluoroethylene (P.T.F.E.).

Reinforcement: Single braid of 303/304 series of stainless steel wire.

TEMPERATURE RANGE

Continuous: 54°C to +260°C



STAINLESS STEEL CORRUGATED HOSE

NOMINAL I.D.	TUBING WITH ONE BRAID	OP.PRESS. KG/CM2	TUBING WITH TWO BRAID		BEND RADIUS
			CONSTANT FIX. MM	PER. BEND MM	
1/4	15	100	60	16	16
3/8	17	64	100	18	18
1/2	19	64	140	20	20
3/4	29	50	230	30	30
1	35	40	260	40	40
1 1/4	44	32	290	50	50
1 1/2	54	25	320	60	60
2	66	20	360	70	70
2 1/2	83	16	420	80	80
3	100	12.5	480	100	100
4	122	12.5	580	120	120
5	150	12.5	680	150	150
6	177	16	800	200	200
8	232	6	950	260	260
10	287	6	1200	340	340
12	340	4	1600	420	420
14	384	4	1675	890	890

APPLICABLE STANDARD

Application: for transfer to hot liquids & gas, general & Corrosive chemicals, petroleum & petrochemical & cryogenic.

CONSTRUCTION

Core: 321/304/316/316L/304L

Braid material: 304/316

TEMPERATURE RANGE

Continuous: Up to 800 degC



PTFE CHEMICAL

NOMINAL BORE (MM)	HOSE O.D. (NOM.) (MM)		WORKING PRESSURE (PSI) (BAR)		MIN. BEND RADIUS (MM)
	(MM)	(MM)	(PSI)	(BAR)	
25	38	150	10	10	90
38	52	150	10	10	120
50	64	150	10	10	150
65	80	150	10	10	180
75	90	150	10	10	210

APPLICABLE STANDARD

Standard: EN 13765 TYPE 2

CONSTRUCTION

Core: Hose made from Polypropylene fabric and films with PVC coated fabric cover, Inner & outer SS 316 wire and lined with layer of PTFE Film.

TEMPERATURE RANGE

Continuous: -30°C to +140°C

Color: Red with white strip

Application: Suitable for acid & Alkalies.



CHEMICAL/OIL

NOMINAL BORE (MM)	HOSE O.D. (NOM.) (MM)		WORKING PRESSURE (PSI) (BAR)		MIN. BEND RADIUS (MM)
	(MM)	(MM)	(PSI)	(BAR)	
25	38	150	10	10	90
38	52	150	10	10	120
50	64	150	10	10	150
65	80	150	10	10	180
75	90	150	10	10	210

APPLICABLE STANDARD

Standard: EN 13765 TYPE 2

CONSTRUCTION

Core: Hose made from Polypropylene fabric and films with PVC coated fabric cover, Inner wire is SS/GS and outer wire of Galvanised MS.

TEMPERATURE RANGE

Continuous: -30°C to +80°C

Color: Green with white strip

Application: Suitable for acid & Alkalies/ Petroleum Product.



XLPE CHEMICAL SUNCTION & DISCHARGE HOSE

HOSE I.D. (NOM.) (IN.)	HOSE O.D. (NOM.) (MM)		WORKING PRESSURE (PSI) (BAR)		MIN. BURST PRESSURE (PSI) (BAR)	
	(MM)	(MM)	(PSI)	(BAR)	(PSI)	(BAR)
3/4	19	29	250	17	750	51
1	25	35	250	17	750	51
1.1/4	32	42	250	17	750	51
1.1/2	38	49	250	17	750	51
2	51	63	250	17	750	51
2.1/2	63	77	250	17	750	51
3	76	90	250	17	750	51

Construction

Core: Synthetic rubber with XLPE liner

Reinforcement: High Tensile Synthetic Textile Cord with steel helix and 2 cross anti static wire

Cover: Green colour EPDM, wrapped type, abrasion and weather resistant

Application: Excellent in handling petroleum based products, hydrocarbon solvents, oxidising chemicals, major strong acid and alkali as well as organic uid etc.,



CONVOLUTED / P.T.F.E

HOSE I.D. (NOM.) (IN.)	HOSE O.D. (NOM.) (MM)		WORKING PRESSURE (PSI) (BAR)		MIN. BURST PRESSURE (PSI) (BAR)	
	(MM)	(MM)	(PSI)	(BAR)	(PSI)	(BAR)
3/8	9.5	0.65	16.4	2,175	150	8,700
1/2	12.7	0.78	19.8	1,980	135	7,840
5/8	16.0	0.89	22.6	1,450	100	5,800
3/4	19.0	1.05	26.6	1,460	80	4,640
1	25.4	1.33	33.7	800	65	3,200
1.1/4	31.8	1.59	40.3	665	45	2,660
1.1/2	38.1	2.01	51.0	510	35	2,040
2	50.8	2.44	62.0	365	25	1,480

APPLICABLE STANDARD

Standard: Polyhose proprietary Product

CONSTRUCTION

Core: Helically convoluted sintered tube of polytetrafluoroethylene (PT.FE.).
Reinforcement: Single braid of 304/316 series of stainless steel wire

TEMPERATURE RANGE

Continuous: -54°C to +260°C

Application: For transfer chemical with high temperature etc..



Quick Release Couplings & Hose Fittings



STEAM 2 W/B

HOSE I.D. (NOM.) (IN.)	HOSE O.D. (NOM.) (MM)		WORKING PRESSURE (PSI) (BAR)		MIN. BURST PRESSURE (PSI) (BAR)	
	(MM)	(MM)	(PSI)	(BAR)	(PSI)	(BAR)
3/4	12.7	0.91	23.0	210	18	2600
1	19.0	1.18	30.0	210	18	2600
1.1/4	31.8	1.71	43.5	210	18	2600
1.1/2	38.1	1.95	49.5	210	18	2600
2	50.8	2.52	64.0	210	18	2600

APPLICABLE STANDARD

Standard: IS 10655 Type 3/BS 5342.

CONSTRUCTION

Core: EPDM rubber resistant high temperature steam
Reinforcement: Double steel wire braids
Cover: Black color, EPDM rubber resistant to abrasion, heat and weather.

Application: High Temperature Steam at Pressure of 250psi.



PHOTO GALLERY





**DESIGNING A CUSTOMIZED SOLUTION
FOR GAS INDUSTRIES**



WORKS & OFFICE :

194, Por GIDC Estate, Vadodara-391243.

✉ oxyvacindia@gmail.com ☎ 09726024747 / 09726024763

REG. :

22, Akshar Duplex, Opp. FAG, Near ABB, Maneja, Vadodara-13

☎ 09726024799